

# Santa Susana Mountain Park Association

A Non-Profit 501(c)(4) Organization  
Incorporated August 31, 1971

## March 2009 Newsletter

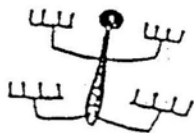
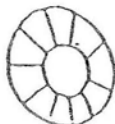
### OPOSSUMS

Recently in the local news an article ran that an opossum was shot in the head and rescued. The medical cost is thousands but the opossum will survive. Many people do not understand what wonderful creatures opossums are especially for gardeners. These marsupial critters do not dig (unlike raccoons or squirrels) but use their long snouts to sniff out snails and slugs and other garden destroyers. They are scavengers and will feast on rotten fruit fallen on the ground. Opossums are nocturnal so their over-sized rat-like appearance is kept in the shadows. It will make menacing hissing sounds and bare its teeth if confronted but they are not dangerous. In fact, the adage, "Playing Possum" comes from their defense mechanism to freeze or curl up and feign death to fool a predator.



### COYOTES

There are conflicts as the areas where housing-development encroaches into open space/wildlife zones. The coyote has been so successful at adapting to urban settings that they are proliferating. Coyotes do feast on small domestic animals, dogs and cats when accessible. People, especially in newly developed areas, canyons, mountain slopes, and outer peripherals of cities need to not let their domestic pets be outside unattended unless they have a secure enclosed area. Coyotes can jump up to 8 feet high to scale fences and are so smart they actually look both ways before crossing the street. Why should the coyote be allowed to live? They keep the rodent population down. As humans kill off all predators by shooting, trapping, poisoning, the numbers of rats, rabbits, ground squirrels increase. Rats and squirrels are known carriers of deadly diseases like the bubonic plague or "Black Death" that wiped out one-third of Europe. This disease continues to "pop-up" even now. For bird-lovers, the cat is a predator that needs to be eliminated. We can go on and on until no animals or humans will walk this earth.



### GENERAL MEMBERSHIP MEETING March 16, 2009, 7:15 pm

Guest Speaker: Mary Benson  
National Heritage Foundation  
Los Angeles Trails Project

Mary will discuss the upcoming Los Angeles Trails Project organized by the Mayor's office as a Day of Service.

She is the founder and CEO of the Los Angeles Trails Project which is the non-governmental organization (NGO) that advocates for the Rim of the Valley (ROV) Trail, a regional trails system surrounding northern Los Angeles.

Get a glimpse of what the San Fernando Valley was like in the days before it was filled up with farms, ranches and houses.

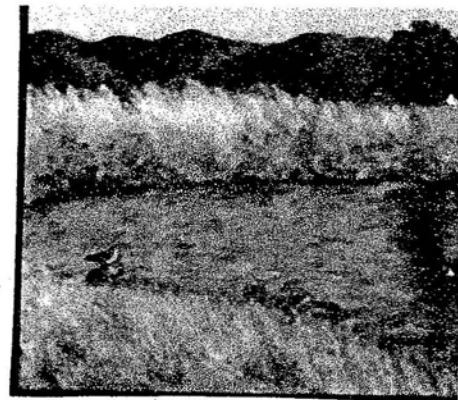
Learn about the pluses and minuses of shared "multi-use trails" and how trails should (or should not) be shared between hikers, horseback riders, bike riders, etc.

For additional information, come to the

**SSMPA General Membership Program meetings take place every 3<sup>rd</sup> Monday, September through November and January through May at the Rockpointe Clubhouse, 22300 Devonshire Street, Chatsworth, on the south side, 1 block before entering Chatsworth Park South. Our program meetings begin at 7:15pm and conclude at 9:00pm.**

The purposes of the Santa Susana Mountain Park Association are the protection, preservation, restoration, and enhancement of the Santa Susana Mountains and Simi Hills as open space lands and wildlife corridors linking the Los Padres National Forest and San Gabriel Mountains, including the Angeles National Forest, to the Santa Monica Mountains; as habitats for plants and animals native to the Santa Susana Mountains and the Simi Hills; as locales of unique geologic formations; as sites of ethnological, archaeological and historical interests; to provide passive recreational opportunities and environmental education opportunities; and, to support the acquisition of new public parks, open space and conservation easements, the expansion of existing parks, participate in the planning of park infrastructure and programs, and support said programs.

**MOUNTAINS RESTORATION TRUST EXHIBIT** Sunday, March 29 from 11 am to 5 pm at Headwaters Corner in Calabasas. The Annual Art Exhibit sponsored by the Allied Artists of the Santa Monica Mountains & Seashore will feature artwork painted on location throughout the Santa Monica National Park & Recreation area. A portion of the artwork sales are donated to MRT. Contact Carla Henry for further information: 818-340-7357. Allied Artists website: [www.allied-artists.com](http://www.allied-artists.com)



Painting by Carla Henry

**EARTHDAY CELEBRATION**  
**CHATSWORTH NATURE PRESERVE**  
Sunday, April 5, 10 am to 4 pm

The Chatsworth Nature Preserve is closed to the public except for special events, hikes led by Audubon or other groups. The Chatsworth Nature Preserve is open for everyone to celebrate Earth Day with various activities, Chumash Story telling at the Ceremonial Circle, nature hikes around the lake with guides from environment groups to view the over 200 bird species, and a host of plants and animals. Bring a lunch/picnic, a blanket or small fold-able chairs, and wear your hiking boots. It's a family event that is free!



### *Cats* (with apologies to Andrew Lloyd Webber)



Late at night between Monday and Tuesday of this week (Feb 23-24), male mountain lion P12 successfully crossed the 101 Freeway in the vicinity of Liberty Canyon. This is enormous news for ongoing NPS/California State Park/Santa Monica Mtns Conservancy work to evaluate the viability of lions in the Santa Monica Mountains and as part of the cooperative NPS/Caltrans assessment of wildlife crossing points along the 101 Freeway. P12 had been residing in the Simi Hills and recently moved into lower Cheeseboro and Liberty Canyons. Very early Tuesday morning, P12 was confirmed south of the 101 Freeway in the (former) Abrams property, now Santa Monica Mountains Conservancy parkland, near Malibu Creek State Park. Although we do not know for certain, it seems likely that P12 used the undercrossing at Liberty Canyon Road. Needless to say, we will continue to closely monitor the movements of this cat! As reported by Raymond M. Sauvajot, Ph.D. Chief of Planning, Science & Resource Management & Adjunct Assistant Professor, UCLA & CSUN Santa Monica Mountains National Recreation Area

There was a sighting on Tuesday (2/17) near the water tank on the ridge northeast of Sage Ranch. For details contact Robert Mionske at 818-347-3049, 818-634-6225 mobile.

Finally a couple of weeks ago, at Rocky Peak North near Fossil Rock, mountain lion cubs were seen

The SSMPA Docent Program is going full blast. Last month we participated in a survey of damage to one of the Archaeological Sites our members have stewardship over. Within the next few months we will also be helping Barbara Tejada, the District Archaeologist for the State, restore the site and catalog what we find there.

In April, the Topanga Docents and the Malibu Creek Docents Association will be giving a training seminar, overnight in Malibu Creek State Park. This program will count towards State Docent certification. Something that's important, helpful to our community and fun. It's a real education.

If you have any interest in the California Archaeological Site Stewardship Program, or if you have any questions about any of our programs, Please e-mail John Luker at: [jcluker2@yahoo.com](mailto:jcluker2@yahoo.com).



All regular bills for the 2009 California Legislative Session had to be submitted as of last Friday. Since the legislature has spent so much time on the budget, there will probably be far fewer bills than usual in a legislative session. Two bills by Assemblyman Cameron Smythe (R-38th) deal with the Santa Susana Mountains,

AB 102, as introduced, Smyth. Santa Susana State Park. Existing law requires the Department of Parks and Recreation to develop, operate, and maintain units of the state park system. This bill would require the Director of Parks and Recreation, not later than January 1, 2012, to establish the Santa Susana State Park Advisory Committee, which would be responsible for assisting the department, in an advisory capacity, to plan for interim and permanent land uses and facilities through the general planning process for the Santa Susana Field Laboratory site in Ventura County. The bill would also require the department to take specified actions with respect to the development of a state park at the Santa Susana Field Laboratory site. and

AB 110, as introduced, Smyth. Parks and open space: Rim of the Valley Trail Corridor: boundary revisions. We are watching these bills very carefully and will keep you informed as to their disposition.

Diana Dixon-Davis  
SSMPA Board

## SSMPA BOARD ELECTIONS—MAY 2009

The SSMPA Nomination Committee is hard at work putting together a full slate for the 2009-2010 SSMPA Board. As required by our By laws we are announcing our upcoming Election Meeting (May 18, 2009 ) and presenting our partial slate of officers.

Anyone wishing to run for any Board position must contact me to be included on the printed ballot. We especially need some new Members at Large. Our final slate and ballot will be printed in the April 2009 newsletter. We will also accept nominations from the floor at the May Election meeting.

Diana Dixon-Davis , Chair, Nominating Committee , (818) 341-4242  
Proposed Slate 2009 -2010 SSMPA Board

- |                     |                                 |
|---------------------|---------------------------------|
| 1 President         | Jack Unger                      |
| 2 Vice President    | John Lucker <i>John Laker</i>   |
| 3 Secretary         | Teena Takata                    |
| 4 Treasurer         | Diana Dixon-Davis               |
| 5 Backup Secretary  | Carla Henry                     |
| 6 Newsletter Editor | Chris Beauvais                  |
| 7 Member at Large   | Reid Bogert                     |
| 8 Member at Large   | Warren Stone                    |
| 9 Member at Large   |                                 |
| 10 Member at Large  |                                 |
| 11 Honorary         | Janice Hingston <i>Hinkston</i> |



## Activities Schedule

Rancho Simi Trailblazers

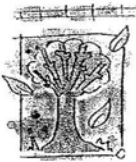
### UPCOMING HIKES

Bring water, lunch,  
lugsoles, hat, sunscreen.

**RAIN CANCELS**



THERE IS AN E-MAIL  
WITH TERRIFIC GRAPHICS  
THAT DETAILS HIKES  
THROUGH DECEMBER 2007  
Zuliebear@aol.com  
ATTN: Dianne



#### Regularly Scheduled Hikes

(Hikes are canceled if it rains. There are no hikes on holidays.)

##### Sunday Evening - Rocky Peak

Meet at 4 PM at the Rocky Peak trailhead at the end of Rocky Peak Road on the Santa Susana Pass. (Meet at 5 PM during daylight savings time.) (Strenuous - 4.8 MRT)

##### Tuesday Evening - Long Canyon

Meet at 6:30 PM in the Long Canyon parking lot. Directions: Take First Street South. Continue when the road's name changes to Long Canyon Road. The parking lot is at the intersection of Long Canyon Road and Wood Ranch Parkway. (Easy to Moderate - 3.0 MRT)

##### Thursday Evening - The Chumash Trail

Meet at 6 PM at Chumash trailhead. Directions: Take the 118 Freeway to Yosemite exit. Go north on Yosemite and turn right on Flanagan Dr. The trailhead is at the end of Flanagan Drive. (Moderate to Strenuous - 5.2 MRT)

#### March Activities

##### March 7th Backbone Trail Part 5: Latigo Canyon Trailhead to Malibu Canyon Trailhead

**Shuttle\*** 9.8 Miles - (1,286' elevation gain) - Moderate to Strenuous Meet at 8 AM near Donut Delite at the corner of Madera and Royal. Please remember, this hike requires ample shuttle cars, so be prepared to drive your car from Donut Delite to both the beginning and ending trailheads. There are no parking fees at either trailhead. Shuttle car driving directions will be distributed at Donut Delite. Bring 2 - 3 quarts of water and lunch. Wear sturdy boots.

##### March 14th Backbone Trail Part 6: Malibu Canyon Road Trailhead (Pioma Road) to the

**Saddle Peak/Stunt Road Trailhead Shuttle\*** 7.2 Miles - (2,300' elevation gain) - Strenuous Meet at 8 AM near Donut Delite at the corner of Madera and Royal. Please remember, this hike requires ample shuttle cars, so be prepared to drive your car from Donut Delite to both the beginning and ending trailheads. There are no parking fees at either trailhead. Shuttle car driving directions will be distributed at Donut Delite. Bring 2 - 3 quarts of water and lunch. Wear sturdy boots.

##### March 21st Wildwood Park: Paradise Falls Loop and Santa Rosa Trail Loop

8 MRT (800' elevation gain) - Moderate Two tried and true favorite loop hikes in Wildwood Park. Meet at 8 AM near Donut Delite at the corner of Madera and Royal. Bring 2 - 3 quarts of water and lunch.

##### March 28th Backbone Trail Part 7: Saddle Peak (Stunt Road) to Trippet Ranch Shuttle\*

6.6 Miles (785' elevation gain) - Moderate Meet at 8 AM near Donut Delite at the corner of Madera and Royal. Please remember, this hike requires ample shuttle cars, so be prepared to drive your car from Donut Delite to both the beginning and ending trailheads. The parking fee is \$5 at Trippet Ranch (Topanga State Park). There is no parking fee at Saddle Peak/Stunt Road Trailhead. Parking fees will be shared between everyone in attendance. Shuttle car driving directions will be distributed at Donut Delite. Bring 2 - 3 quarts of water and lunch. Wear sturdy boots.

#### STAGECOACH TRAIL

STAGECOACH TRAIL - 9:00AM. INTERPRETATIVE HIKE INTO HISTORY OF SANTA SUSANA PASS STATE HISTORIC PARK. MEET AT 9:00AM FOR A 2 1/2 MI (400' GAIN) LOOP UP THE STAGECOACH TRAIL. Corrections: change Trail head (meeting place) to park entrance on Larwin Ave. about 200 feet south of DEVONSHIRE on right. Park on Street. LEADER: LEE BAUM (818-341-1850/SIERRA CLUB-SANTA SUSANA MTNS TASK FORCE OUTING). STAGECOACH TRAIL HIKES WILL BE ON THE 3RD SUNDAY OF EACH MONTH, STARTING OCTOBER.



SEND US YOUR E-MAIL ADDRESS: [chrissmpa@gmail.com](mailto:chrissmpa@gmail.com). This allows us to notify you of last minute news and changes in our meetings. SSPMA is also working on Saving Trees by E-Mailing our newsletter rather than mailing. Postage increases in May: from .42 to .44 1<sup>st</sup> Class Mail

Website: [SSMPA.COM](http://SSMPA.COM)  
E-Mail: [MAIL@SSMPA.COM](mailto:MAIL@SSMPA.COM)



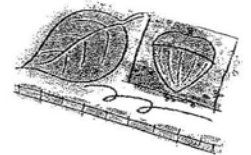
### Santa Susana Mountain Park Association

invites you to JOIN / RENEW (circle one).

Investing in the future of our communities and its resources is probably one of the best expenditures of our time and efforts. Return this cutoff with your contribution lend your support. Make your check payable to SSPMA and send to SSPMA, P.O. Box 4831, Chatsworth, CA 91313-4831.

- Senior or Student (\$10.00)     Individual (\$15.00)     Family (\$20.00)  
 Life Member (\$150.00)     Business / Organization (\$30.00)

Name: \_\_\_\_\_ Phone: \_\_\_\_\_  
Street Address: \_\_\_\_\_ E-mail: \_\_\_\_\_  
City / State / Zip: \_\_\_\_\_  
Special Interest / Expertise: \_\_\_\_\_





Santa Susana Mountain Park Association

**Officers:**

President  
Vice President  
Secretary  
Treasurer

Jack Unger-  
Warren Stone  
Teena Takata  
Diana Dixon Davis

**Members at Large:**

Reid Bogert  
Carla Henry  
John Luker  
Jan Miller  
Patty Miller  
Newsletter Editor  
Chris Beauvais

**SSMPA FUNDRAISING COOKBOOK and HISTORICAL REMEMBRANCES**

We are collecting recipes for a fund raising cookbook and need your help. Please send your recipes to board member, Carla Henry. If you can, send your recipe as a Word Document and attach to your e-mail to this e-mail address: [carlamamay@aol.com](mailto:carlamamay@aol.com)

The cookbook categories are as follows:  
Whooping It Up Party Treats & Drinks  
Kick Start with Soups & Salads  
Breakfast, Lunch and Main Meal Grub

Finger Licking Good Barbecue  
Belly Pleasing Breads & Rolls  
Mouth Watering Desserts  
Candy, Cookies and Snacks



The cookbook will have a western theme but recipes do not have to be "western." The recipe can be a traditional family favorite, a time-saver, just a great recipe you enjoy. Note: If it is a recipe directly from a published cookbook, it can't be used unless you've altered it. If you found the recipe in the newspaper than it's okay to include. If you want to add a few lines about the recipe or some historical information, please include. Please include your name and phone number so you can be reached if there are questions. If you can, send your recipe as a Word Document and attach to your e-mail to this e-mail address: [carlamamay@aol.com](mailto:carlamamay@aol.com).

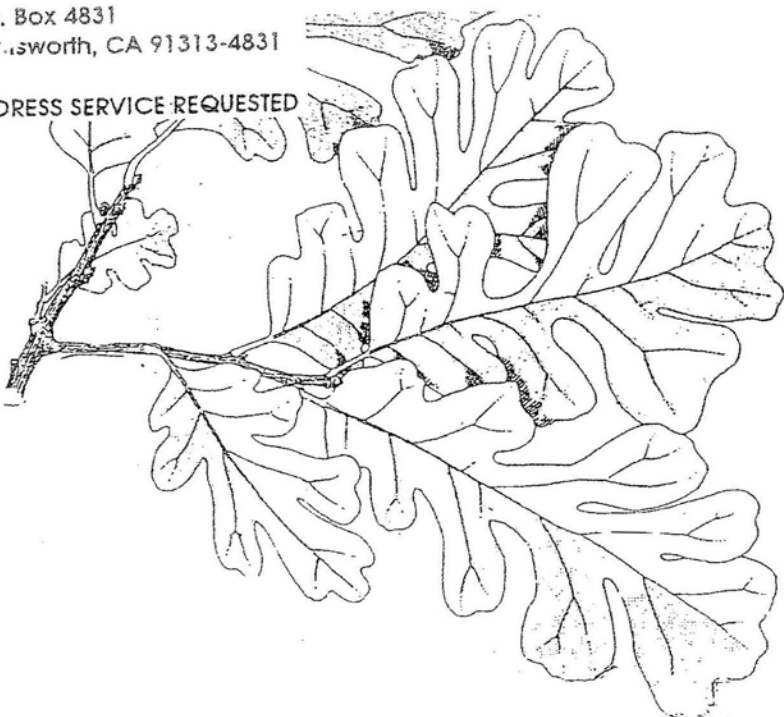
We welcome your submission of historical information, anecdotes or historical photos from/pertaining to the Santa Susana/Simi Hills region. Please type your name the way you want it printed in the cookbook. This project will take approximately six to eight months to publish. There is no payment for submissions of recipes or text but your name will be noted alongside your entry. The cookbooks will go on sale and all proceeds will be applied to the cost of publication and for fund raising purpose benefiting the Santa Susana Mountain Park Association efforts to preserve and protect wildlife trails, archaeological, cultural and historic sites in the Santa Susana Mountains and Simi Hills.

SSMPA's February General Meeting had a movie showing of "Santa Fe Trail" filmed in Chatsworth. Before the movie rolled, Jerry England, author of "Reel Cowboys" discussed his wonderful book of pictorials and listing of movies filmed on location in the Santa Susana Mountains/Simi Hills-a must for any movie buff or Western movie lover. Order his book on this website: [www.cowboyup.com](http://www.cowboyup.com)

Santa Susana Mountain Park Association &  
Foundation for the Preservation of the Santa Susana Mountains  
P.O. Box 4831  
Chatsworth, CA 91313-4831

ADDRESS SERVICE REQUESTED

Non-Profit  
US Postage  
Paid  
Van Nuys, CA  
Permit No. 761



LIFE Member  
Nancy Razanski  
22149 James Alan Circle  
Chatsworth CA 91311-2051